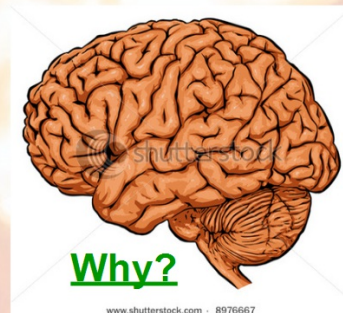




Most of the puppet governments in the satellite states of the Eastern Bloc were repressive in nature.

5 minutes thinking time - discuss this with your learning partners.



November 6th



3 Cold War Crises
Lesson 3: The Crisis in Berlin.



Learning Gain - by the end of this lesson I will be able to discuss the refugee crisis in Berlin and hypthosise what the response of the USSR and USA to it will be..



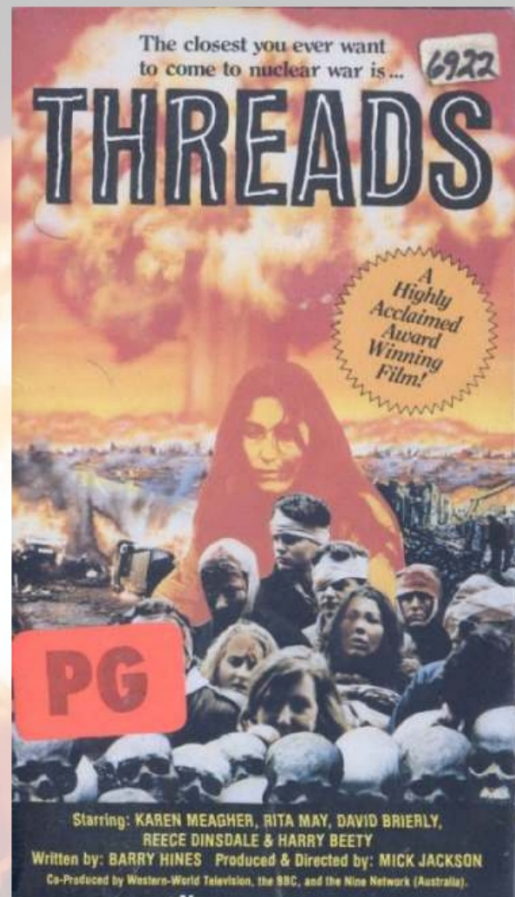
Learning Steps:



- Think about the cause of the repressive nature of the satellite states.
- Explore the refugee crisis in Berlin.
- Think about what the USA/USSR responses to this crisis will be.



Threads is a 1984 BBC television play depicting the effects of a nuclear war on the United Kingdom and its aftermath. Written by Barry Hines and directed by Mick Jackson, Threads was filmed in late 1983 and early 1984. The premise of Threads was to hypothesise the effects of a nuclear war on the United Kingdom after an exchange between the Soviet Union and the United States escalates to include the UK.



Homework



Plenary

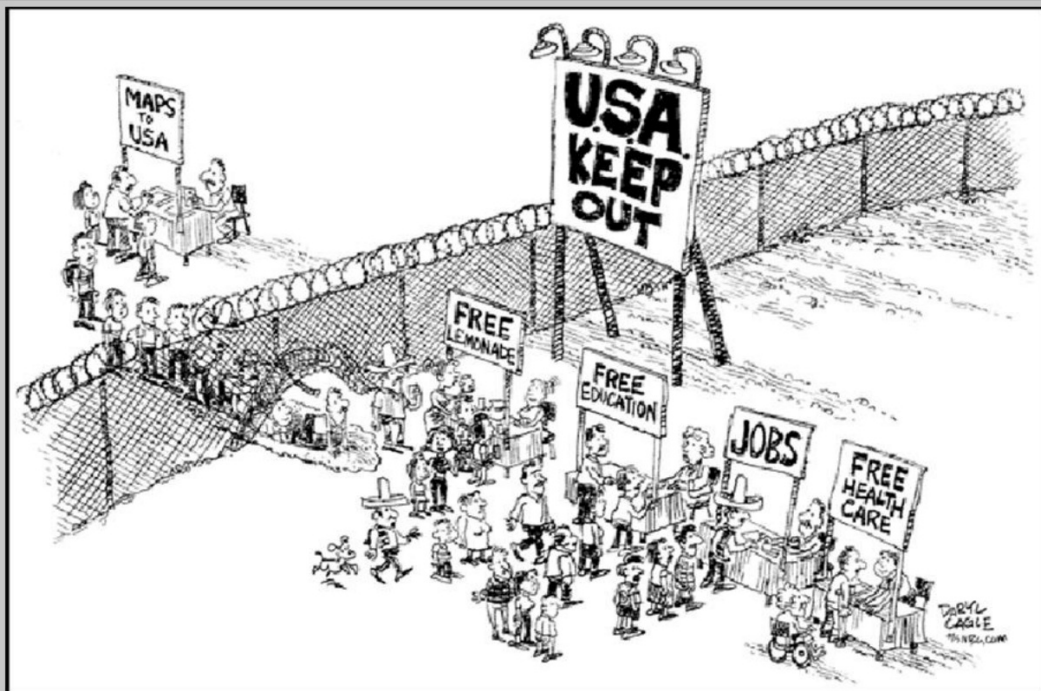


Did nuclear weapons keep the peace during the Cold War?

OR



Watch the music video on the website of Two Tribes and write a paragraph about what the song and video tells you about the influence of the Cold War on British Culture in 1983/4.



**SOLO
work**

We are constantly told that Immigration is a problem.
But why is it that people want to come to countries like
the UK and USA.
Use this cartoon to help your thinking.



**TWO minutes to
write down your thoughts.**



Take TWO minutes to share your ideas with a learning partner.

Make sure you add any new ideas to your own.



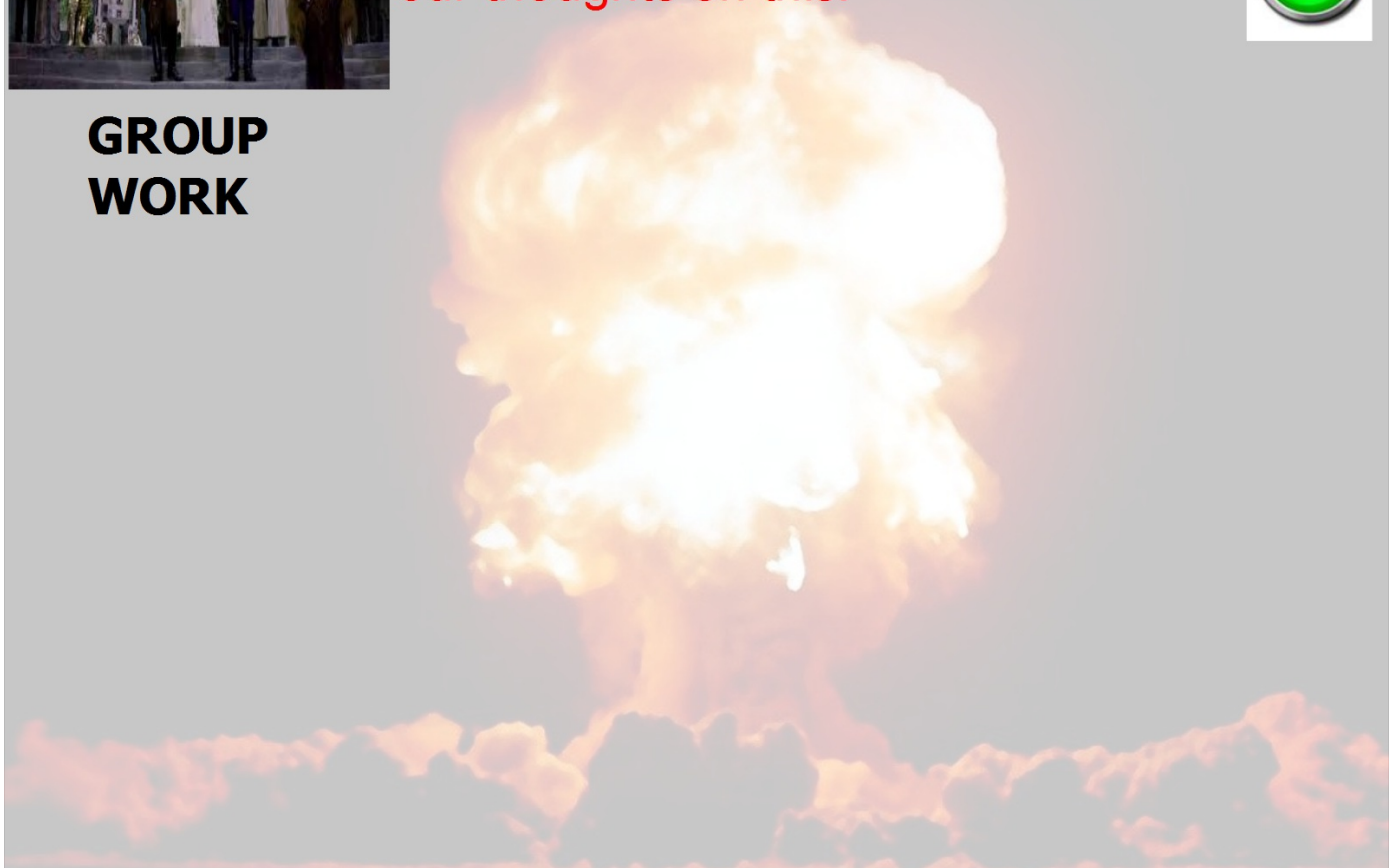
**PAIRED
WORK**



Lets create a mind map to summarise our thoughts on this.



**GROUP
WORK**





Between 1945 and 1950, over 15 million people emigrated from Soviet-occupied eastern European countries to the West.

Taking advantage of this route, the number of Eastern Europeans applying for political asylum in West Germany was 197,000 in 1950, 165,000 in 1951, 182,000 in 1952 and 331,000 in 1953.



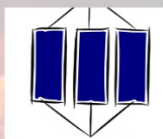
Why is this a problem for the Communist Eastern Bloc?

By the early 1950s, the Soviet approach to controlling national movement, restricting emigration, was emulated by most of the rest of the Eastern Bloc, including East Germany. Up until 1953, the lines between East Germany and the western occupied zones could be easily crossed in most places. Consequently, the Inner German border between the two German states was closed, and a barbed-wire fence erected. In 1955, the Soviets passed a law transferring control over civilian access in Berlin to East Germany, a government not recognized in the US-allied West. When large numbers of East Germans then defected under the guise of "visits", the new East German state essentially eliminated all travel between the west and east in 1956. With the closing of the Inner German border officially in 1952, the border in Berlin remained considerably more accessible than the rest of the border because it was administered by all four occupying powers. Accordingly, Berlin became the main route by which East Germans left for the West. The Berlin sector border was essentially a "loophole" through which East Bloc citizens could still escape. The 3.5 million East Germans that had left by 1961 totaled approximately 20% of the entire East German population. The loss was disproportionately heavy among professionals—engineers, technicians, physicians, teachers, lawyers and skilled workers. The brain drain of professionals had become so damaging to the political credibility and economic viability of East Germany that closing this loophole and securing the Soviet-imposed East-West-Berlin frontier was imperative.

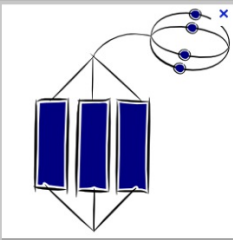
Task:



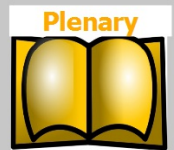
Create a timeline of events between 1950 and 1961.



Complete the Force Field Analysis sheet examining the crisis.



The Fortune Teller of History...woaaaahhh!!



I predict that the Soviets will respond to the refugee problem by...

This is because...

